



TANKFÜSSE

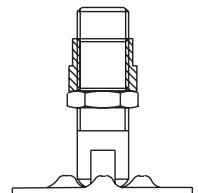
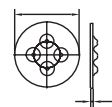
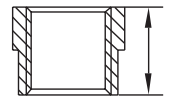
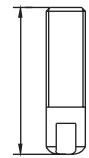
TANKFÜSSE

PIEDS POUR CUVES

PIEDE PER SERBATOIO

- Z406.00.12
- Z406.00.34
- Z406.01.00
- Z406.01.14
- Z406.01.12
- Z406a.00.12
- Z406a.00.34
- Z406a.01.00
- Z406a.01.14
- Z406a.01.12
- Z406b.00.12
- Z406b.00.34
- Z406b.01.00
- Z406b.01.14
- Z406b.01.12
- Z407.123
- Z407.120
- Z407.160
- Z406.012
- Z406.034
- Z406.100
- Z406.101
- Z406.114
- Z406.112

Bezeichnung désignation • significato	Grösse Dimensions • Dimensioni		INOX	S235
	Fusskalotte 1.4301/304L Pied niveleur • Piede livellatore	ø ½"		
ø ¾"		Länge = 100 mm	✓	✗
ø 1"		Länge = 120 mm	✓	✗
ø 1¼"		Länge = 150 mm	✓	✗
ø 1½"		Länge = 150 mm	✓	✗
Muffe 1.4301/304L Manchon • Manicotto	ø ½"	Länge = 27 mm	✓	✗
	ø ¾"	Länge = 30 mm	✓	✗
	ø 1"	Länge = 35 mm	✓	✗
	ø 1¼"	Länge = 40 mm	✓	✗
	ø 1½"	Länge = 50 mm	✓	✗
Kontermutter 1.4301/304L Ecrou • Controdado	ø ½"		✓	✗
	ø ¾"		✓	✗
	ø 1"		✓	✗
	ø 1¼"		✓	✗
	ø 1½"		✓	✗
Fussplatte 1.4301/304L Rodelle base • Rondella base	ø 1"	Rodelle ø 120 x 3 mm	✓	✗
	ø 1"	Rodelle ø 120 x 5 mm	✓	✗
	ø 1½"	Rodelle ø 160 x 8 mm	✓	✗
Kalotte komplett 1.4301/304L Pied niveleur complet Piede livellatore completo	ø ½"	Rodelle ø 120 x 3 mm	✓	✗
	ø ¾"	Rodelle ø 120 x 3 mm	✓	✗
	ø 1"	Rodelle ø 120 x 5 mm	✓	✗
	ø 1"	Rodelle ø 160 x 8 mm	✓	✗
	ø 1¼"	Rodelle ø 160 x 8 mm	✓	✗
	ø 1½"	Rodelle ø 160 x 8 mm	✓	✗



(BAR) max. Betriebsdruck
Pression maximal
Pressione maximale

(BAR) max. Vakuumfähigkeit
Vacuum maximal
Vacuum maximale

°C max. Betriebstemperatur
max. temperature de service
max. temperatura de servizio

Anzahl Schrauben
nombre serrages
pezzi Viti

KG Gesamtgewicht
Poids unitaire
Peso intero